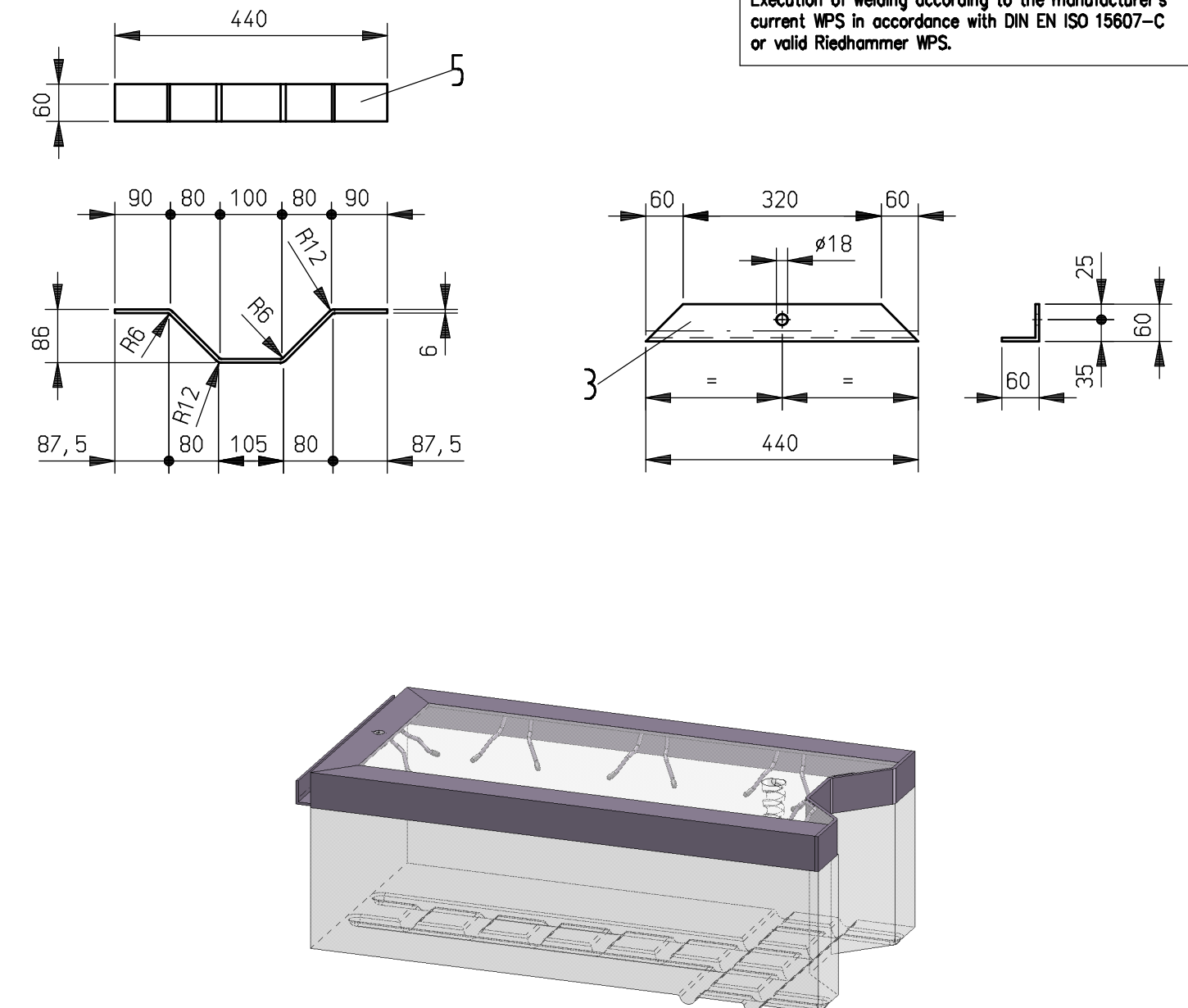
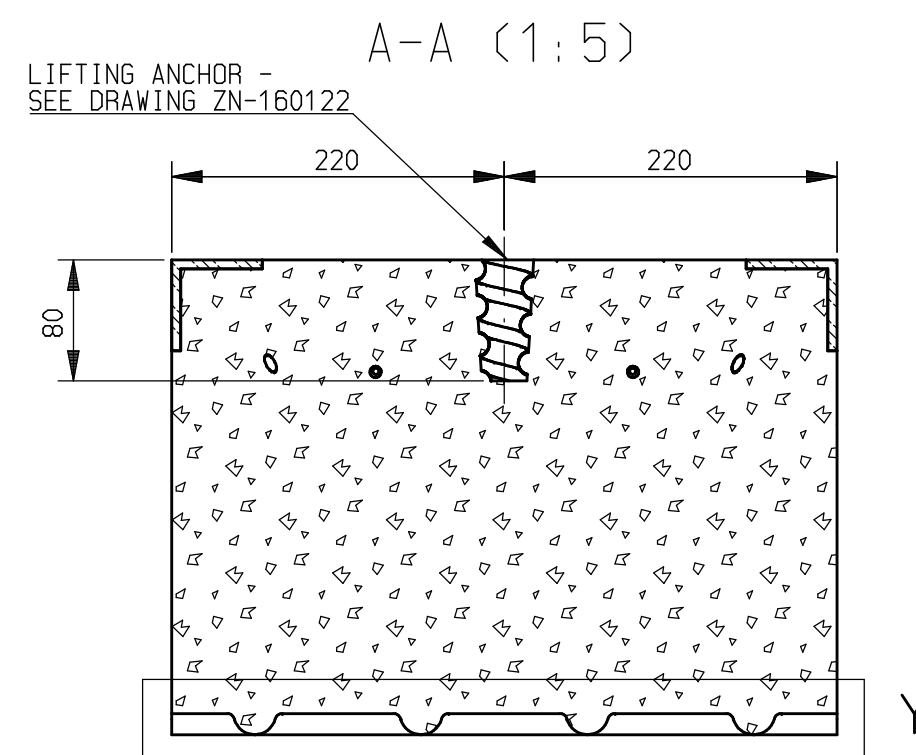
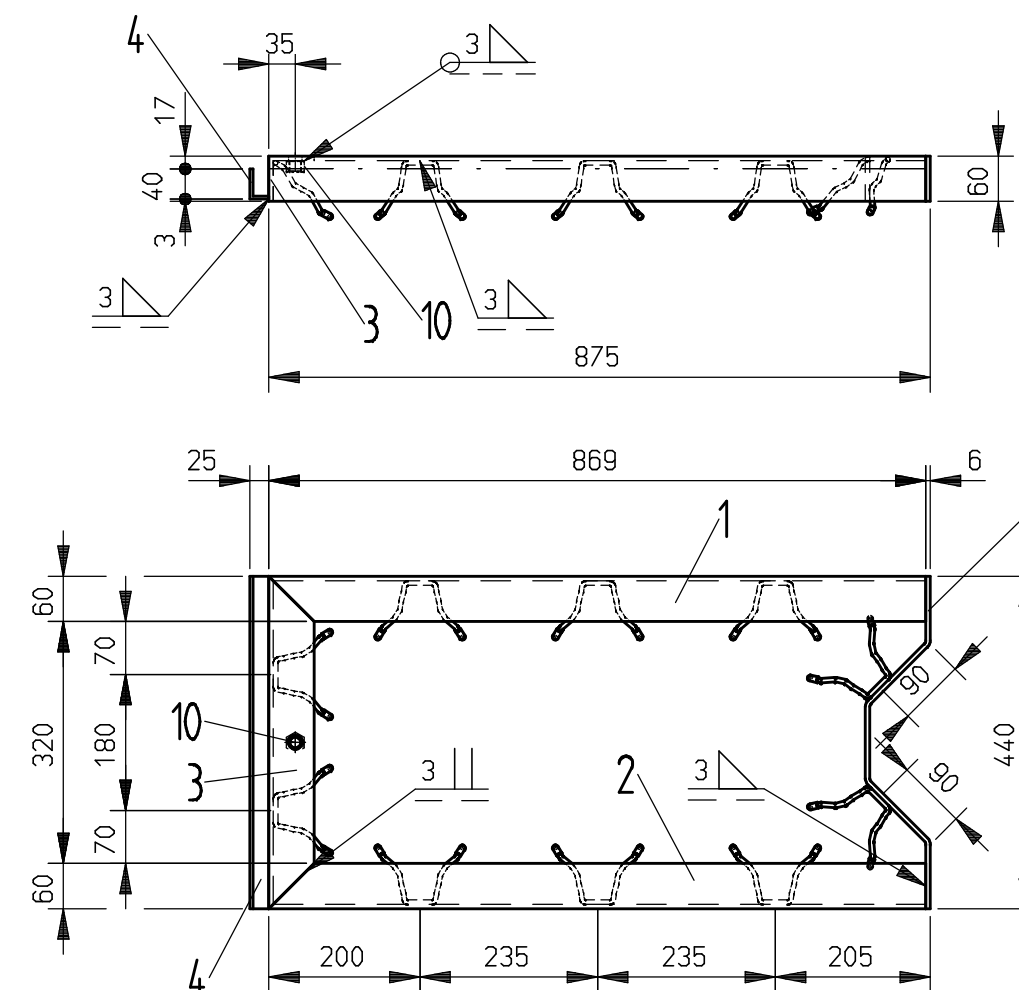


STEEL FRAME



CARBON STEEL (ST) (Ident.050259):

14, 28kg

[illegible]


REFERENCE DRAWINGS

DRAWING NO.	TITLE
ZN-241521	TOP BLOCK ARRANGEMENT
T_1001	REFRACTORY MATERIAL SPECIFICATION
T_1002	REFRACTORY ASSEMBLY SPECIFICATION

NOTES

- ALL DIMENSIONS IN mm UNLESS OTHERWISE INDICATED
- TOP SURFACE OF TOP BLOCKS TO BE ROUGH-TEXTURED TO PREVENT SLIPPAGE
- FINAL QUANTITY OF LIFTING ANCHORS SEE BoM.1003 - TOP BLOCKS
- ALL PIGTAIL ANCHORS THAT ARE IN CONTACT WITH CONCRETE HAVE TO BE COATED WITH SYNERLOGIC PLASTICOAT®. MAXIMUM LAYER THICKNESS IS 1 mm.

3% = spare part I = provided to J = job site S = supplier				
	c	Guideline text adjusted	Stuckmann	23.10.2024
	b	Additional Mirrored Position Added	Stuckmann	01.10.2024
	Ind./nd.	Änderung nur über CAD/modification only via CAD	Name/name	Datum/date

Wenn nicht anders angegeben, ist die Arbeitsvorbereitung und Durchführung der Schweißprozesse vom Lieferanten zu bestimmen. Unless otherwise stated, the work preparation and execution of the welding must be determined by the supplier.		Datum/date	Name/name	Werkstoff/material 	
	Erstellt / created	04.07.2024	Stuckmann		
	TD-Freig. / TD-release	05.12.2024	Daeumler		
	Fig.Freig. / prod.release	05.12.2024	Daeumler		
	Maßstab Scale	Benennung/designation			Zeichn.Nr./dwg.-no. ZN-235924 Teile-Nr./part-no. TN-160300 Index c A2 Bemerkung/remark Ursprung/origin  Blatt/page
	1:10	Topblock – Gurtwand B1			
		Top Block – Head Wall B1			